



## VÖGELE SUPER 800i

ID: KFBF624

**Category:** Asphalt Crawler Paver

**Manufacturer:** VÖGELE

**Model:** SUPER 800i

**Year of manufacture:** 2025

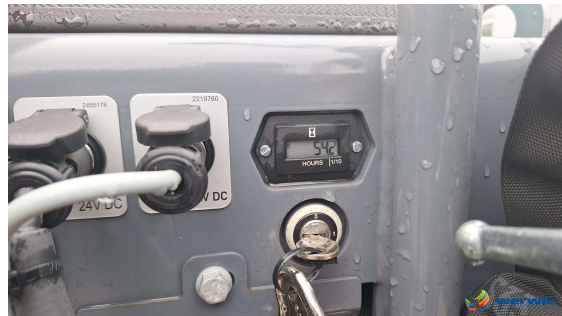
**Operating hours:** 148 h

**Weight:** 6,6 t

**Working width:** 1,10 - 2,00 m

### Description:

- screed AB200TV
- working width hydr. adjustable from 1.10 - 2.00 m
- optional extensions to 2,70 m or 3,20 m working width
- automatic leveling Niveltronic Basic
- 1x ultrasonic sensor and 1x mechanical sensor for height leveling
- 2x ultrasonic sensors for material
- VÖGELE ventilation system above the material augers
- tracked drive
- Ergo-Basic operation
- Deutz Diesel Engine, 4 cyl.
- EU Stage V, US EPA Tier 4f
- working lights
- original color green
- \*GERMAN MACHINE FROM FIRST OWNER\*



**werwie GmbH**  
 Rudolf-Diesel-Strasse 3, 54329 Konz, Germany  
 Phone: +49 6501 93630  
 Fax: +49 6501 9363-63  
 Email: [werwie@werwie.com](mailto:werwie@werwie.com)