



## VÖGELE MINI 500

ID: KFBC260

**Category:** Asphalt Crawler Paver

**Manufacturer:** VÖGELE

**Model:** MINI 500

**Year of manufacture:** 2023

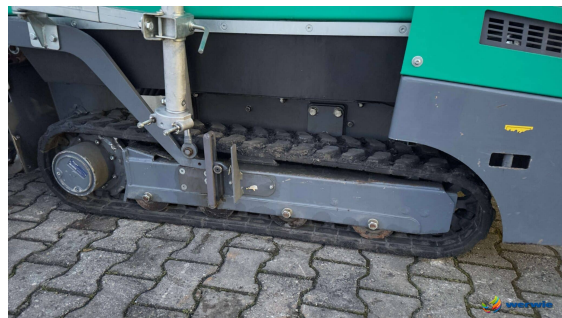
**Operating hours:** 240 h

**Weight:** 1,6 t

**Working width:** 0,80 - 1,35 m

### Description:

- Screed AB135V
- Working width hydr. adjustable from 0,80 to 1,35 m
- Installation depth up to 10 cm
- gas heater with 3 burners and electronic ignition
- drive via rubber-bonded steel tracks
- Engine Kubota Z602-E4B-EU-X7 (2 Cyl.)
- emission level V / US standard EPA Tier 4f
- original color green
- transport dimensions 2,670 x 870 x 1,585 mm
- incl. leveling device and screed remote control
- incl. extension shoes up to 1.80 m
- incl. reduction shoes down to 0.25 m



**werwie GmbH**

Rudolf-Diesel-Strasse 3, 54329 Konz, Germany

Phone: +49 6501 93630

Fax: +49 6501 9363-63

Email: [werwie@werwie.com](mailto:werwie@werwie.com)